



Welcoming the next generation  
February 15th, 2010

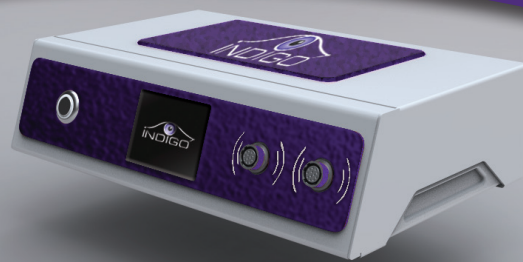
Within each of us resides an innate wisdom that is beyond our conscious minds. The super-conscious mind integrates and responds to what we experience to maintain our optimal wellness.

Many mystics believe the dwelling place for this innate intelligence is within the third eye (in yogic philosophies called Ajna), which has strong associations in ancient writings with the color indigo. Modern science identifies the locus of this intelligence to be correlated with the master pituitary gland, hypothalamus and pineal - which sit just behind the mystical "third eye" center.

The Indigo was created through years of research into the fields of bioenergetics, and utilizes similar scientific theories and technological knowledge as devices like the ultrasound, MRI, Cat SCAN, EEG, EKG, EMG, GSR, TVEP all of which measure the body electric in order to provide information to the client about the state of their health. The Indigo, however is gentler and less invasive to the body.

It is the most accurate and sensitive technology of its kind for identifying stress reactions to over 10,000 trivector voltametric algorithmic signatures stored in its database, such as those taken from nutritional items, emotional imponderable formulas, allergens, toxins and more.

The sophisticated wave-form generator also works to re-train harmony to the physical and emotional bodies by addressing aberrant stressful reactions to help the client create more cohesive and coherent patterns. Indigo allows the practitioner to have greater access into the profile of stress; it is a powerful tool for client education, stress reduction and restoration of vibrant wellness. Indigo assists in reconnecting clients' to their own inner knowing; revealing their innate wisdom to assist in identifying where to make lifestyle change and which specific stress reactions to manage. The human body does not come with an instructions manual, however, Indigo can provide the clues necessary to create self directed control, vitality and thriving.



**Retail Price - \$24,000**

### Trade-in Program

|                |         |
|----------------|---------|
| SCIO 2009      | \$3,500 |
| SCIO 2007-2008 | \$4,500 |
| SCIO 2004-2006 | \$5,500 |
| QXCI           | \$8,000 |

**Pre-Purchase and save!**

**Special Offer November Only!**  
**Full System - \$22,000**

### Trade-In Program

|                |         |
|----------------|---------|
| SCIO all years | \$3,000 |
| QXCI           | \$6,000 |

| Spec   | Description                  | SCIO             | Indigo                  | Ratio of Improvement |
|--|------------------------------|------------------|-------------------------|----------------------|
| Transfer Rate                                  | Bidirectional PC <-> Indigo  | 9,600 bps        | 115,200 bps             | 12X                  |
| Sensitivity                                    | ADC                          | 10 bit (4.88 mV) | 16 bit (0.0000763 mV)   | 64X                  |
| Frequency Range                                | Output frequencies available | 100 kHz          | 5 mHz                   | 50X                  |
| Amplitude Range                                | Voltage output available     | 3.3V             | 5V                      | 1.5X                 |
| Dimensions                                     |                              |                  | 3" x 6.5" x 9" (approx) |                      |
| <b>Features</b>                                |                              |                  |                         |                      |
| Graphic LCD screen                             |                              | N                | Y                       |                      |
| Auto Jack Sensing                              |                              | N                | Y                       |                      |
| Simultaneous input/output                      |                              | Y                | Y                       |                      |
| Fast on the fly switching from input to output |                              | N                | Y                       |                      |
| All 12 channels bidirectional and programmable |                              | N                | Y                       |                      |